

MODEL NO : OBO-20032G-01

Features: Conformity RoHS Directive(2002/95/EC) Requests.(*)

OBO PRO

2006 MAY 18.

文件发行章

1. General Specifications

Items	Spec.
Magnet	Materials NdFeB(N35) Size: $\phi 6.5 \times 1.5$ mm.
Weight	Approx 1.7 Grams
Nominal Impedance	32 Ohm \pm 15% At 1000 Hz / 1.0V
Power Rating	Normal 0.1W. Maximum 0.2W.
Lowest Resonant Frequency	700 \pm 150 Hz.
Output Sound Pressure Level (S.P.L)	74 \pm 3dB /0.1W 0.5Meter Average at 1000,1200,1500,2000Hz Measuring device: see Item 4.(Secundum IEC-268-5 Statute)
Frequency Range	550 ~ 5,000 Hz. Average SPL-10 dB.
Distortion	5% Maximum At 1000 Hz. 0.1W.
Abnormal Sound Test	Must be Normal Tested by 1.79Volts. Sine Wave.
Polarity	Diaphragm shall move Forward when Apply a Positive DC Current to the "+" or "Marked" Terminal.
Operating Temperature	-25°C to +50°C
Storage Temperature	-25°C to +55°C

2. Environmental Test

Humidity Test	High Temperature	:	+40°C \pm 3°C
	Relative Humidity	:	90% ~ 95%
	Duration	:	96 Hours
	Duration of recovery	:	6 Hours
Temperature Cycle Test	Temperature	:	+55°C \rightarrow +25°C \rightarrow -25°C \rightarrow +25°C
	Duration	:	1Hour 1Hour 1Hour 1Hour
	Cycle	:	3 Cycles
Vibration Test	Vibration Direction	:	3 axes
	Mounting	:	Unit Shall Be Rigidly Restrained On The Table
	Frequency	:	1,000 Cycle/Minute
	Amplitude	:	1.5m/m
	Endurance	:	1 Hour in Each Plane
	Duration of Transfer Time	:	Less Than 5Minutes
Load Test	White Noise With Weighted Filter 1.79 Volts.(RSM) 100 Hrs. 20~20,000Hz Resonant Frequency.		
Drop Test	75cm Free Falling On Concrete Floor, with 10 times.		

OBO Pro.2

SPECIFICATIONS

MODEL NO.
OBO-20032G-01

PART NAME
DYNAMIC SPEAKER

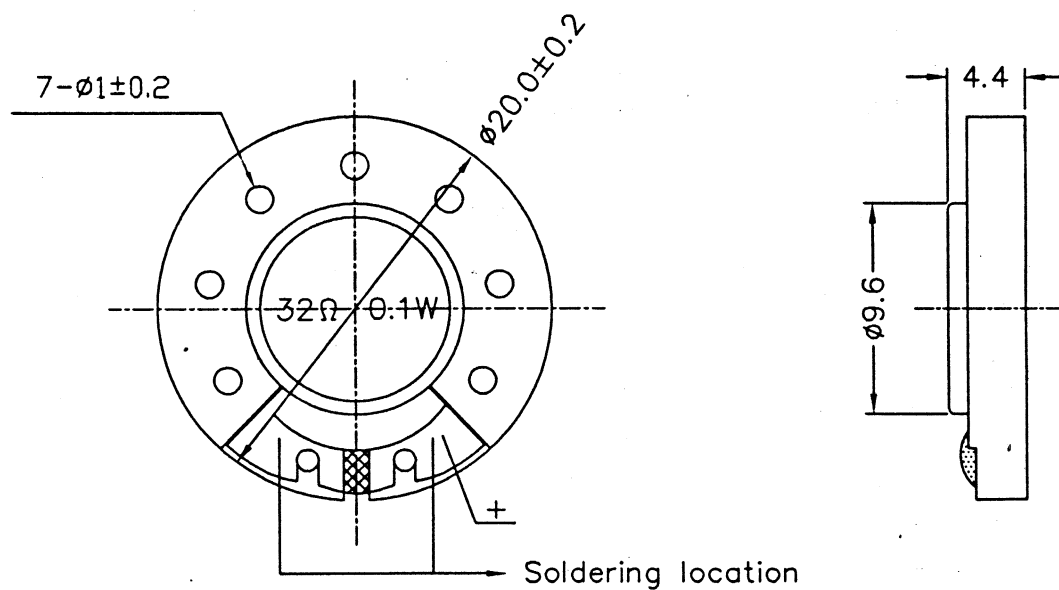
SHEET
3 OF 7

3. Mechanical Layout And Dimensions

OBO PRO.2 INC.
2006 MAY 18.
文件发行章

3.1 Dimensions

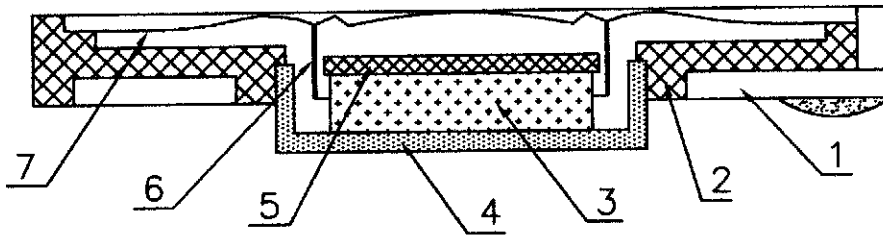
Unit:mm Tolerance:±0.3



※1 PCB Soldering Temperture 380° Max For 3 Seconds.

3.2 Construction Diagram

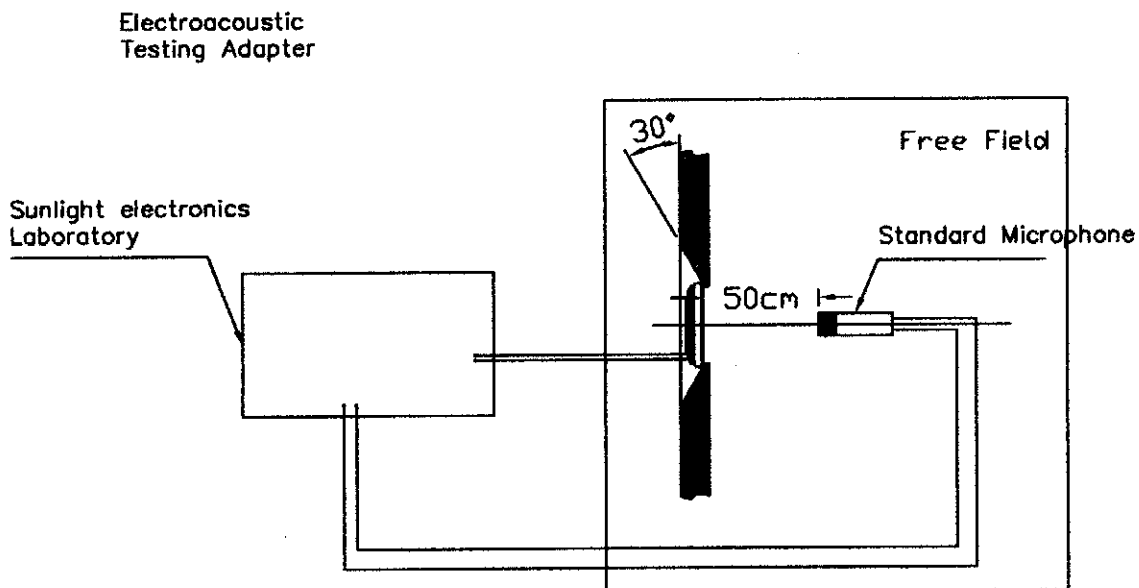
OBO PRO
2006 MAY 18
文件发行章



8			
7	DIAPHRAGM	MYLAR	1
6	VOICE COIL	DIA 7.5 mm	1
5	WASHER	SPCC	1
4	YOKE	SPCC	1
3	MAGNET	NdFeB	1
2	PLASTICS CASE	ABS	1
1	TERMINAL	P.C.B	1
NO	PART NAME	MATERIAL	Q'TY

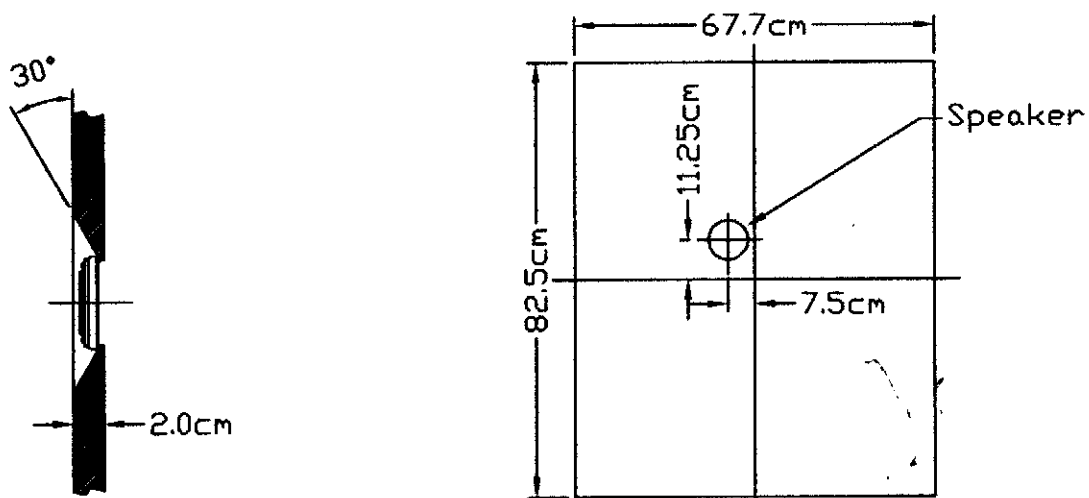
4. Test Method

4.1 Measurement Diagram



OBO PRO.2
2006 MAY 18.
文件发行章

4.2 Standard Baffle



OBO Pro.2

SPECIFICATIONS

MODEL NO.
OBO-20032G-01

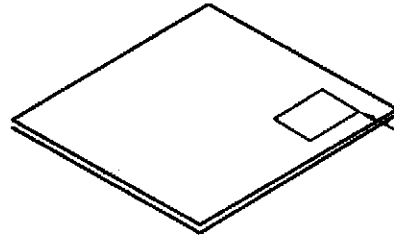
PART NAME
DYNAMIC SPEAKER

SHEET
6 OF 7

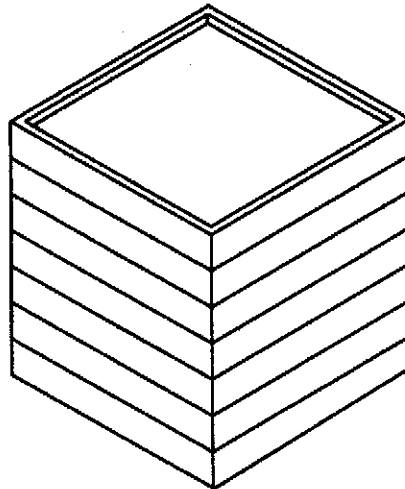
※1 **5. Package**

Unit:mm

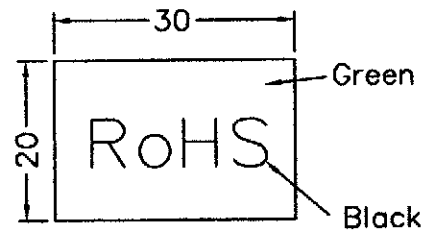
OBO PRO.2
2006 MAY 18.
文件发行章



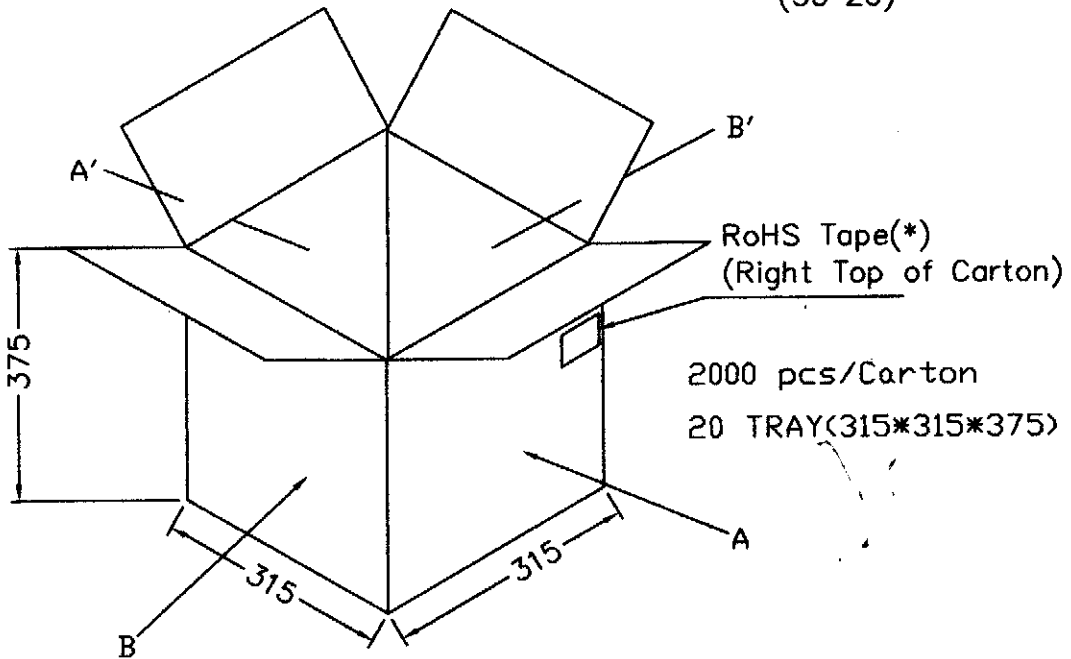
RoHS Tape(*)
(Right Down of Cover)



100pcs/TRAY



RoHS Tape
(30*20)



RoHS Tape(*)
(Right Top of Carton)

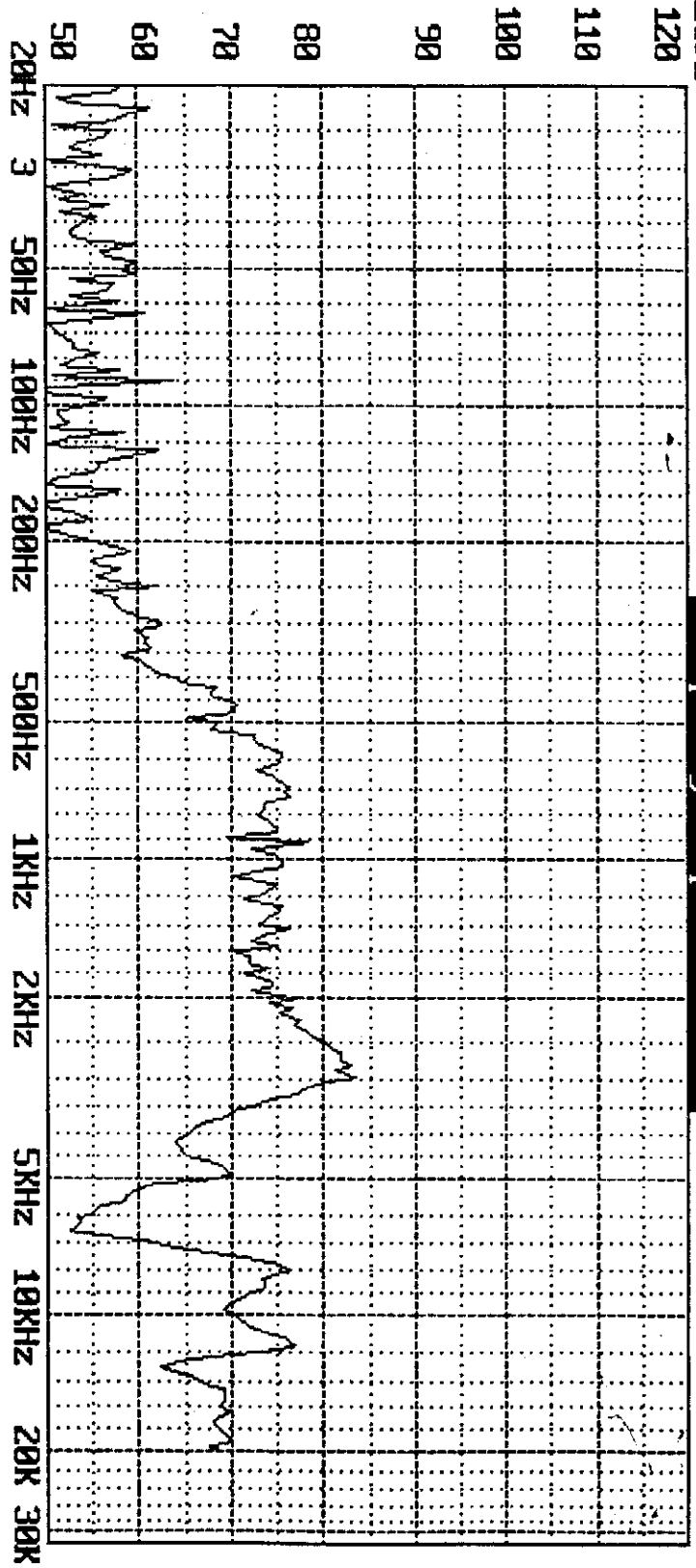
2000 pcs/Carton
20 TRAY(315*315*375)

Firm: Model: DATE:05-11-2006 TIME:14:30:24
1000Hz Sens. = 75.3dB SPL Pass F.R.: Pass DCR: 31.4R Pass
Average SPL: 74.5dB SPL Pass (1000:1200:1500:2000Hz) Sweep Speed: 1/24 Oct.

B 6.11

dB SPL

Frequency Response curve



Voltage applied for **F.R.** = 1.790V **Start F.** = 20Hz **Stop F.** = 20000Hz
Measuring Distance = 0.01M

Mfg.:

Measured using Sunlight 1600; Fax:886-2-22230727