

OBO.Pro.2.**SPECIFICATIONS****MODEL NO.**
OBO-36025F-01**PART NAME**
DYNAMIC SPEAKER**SHEET**
2 OF 7**MODEL NO : OBO-36025F-01**

Features:Conformity RoHS Directive(2002/95/EC) Requests.(*)

2006 JUN 19.
文件发行章**1. General Specifications**

Items	Spec.
Magnet	Materials NdFeB Size: $\phi 12.5 \times 1.5 \text{mm}$
Weight	Approx 8.5 Grams
Nominal Impedance	25 Ohm $\pm 15\%$ At 1000 Hz.
Power Rating	Normal 0.2W. Maximum 0.5W.
Lowest Resonant Frequency	500 \pm 150 Hz.
Output Sound Pressure Level (S.P.L)	81 \pm 3dB 0.2Watt. 0.5Meter. Average at 800,1000,1200,1500Hz.
Frequency Range	320~7200 Hz. Average SPL-10 dB.
Distortion	5% Maximum At 1000Hz. 0.2W.
Abnormal Sound Test	Must be Normal Tested by 2.24Volts. Sine Wave.
Polarity	Diaphragm shall move Forward when Apply a Positive DC Current to the "+" or "Marked" Terminal.
Operating Temperature	-25°C to +50°C
Storage Temperature	-25°C to +55°C

2. Environmental Test

Humidity Test	High Temperature	:	+40°C \pm 3°C
	Relative Humidity	:	90% ~ 95%
	Duration	:	96 Hours
	Duration of recovery	:	6 Hours
Temperature Cycle Test	Temperature	:	+55°C \rightarrow +25°C \rightarrow -25°C \rightarrow +25°C
	Duration	:	1Hour 1Hour 1Hour 1Hour
	Cycle	:	3 Cycles
Vibration Test	Vibration Direction	:	3 axes
	Mounting	:	Unit Shall Be Rigidly Restrained On The Table
	Frequency	:	1,000 Cycle/Minute
	Amplitude	:	1.5m/m
	Endurance	:	1 Hour in Each Plane
	Duration of Transfer Time	:	Less Than 5Minutes
Load Test	White Noise With Weighted Filter 2.24Volts.(RMS) 100 Hrs. 20~20,000Hz Resonant Frequency.		
Drop Test	75cm Free Falling On Concrete Floor, with 10 times.		

OBO Pro.2.

SPECIFICATIONS

MODEL NO.
OBO-36025F-01

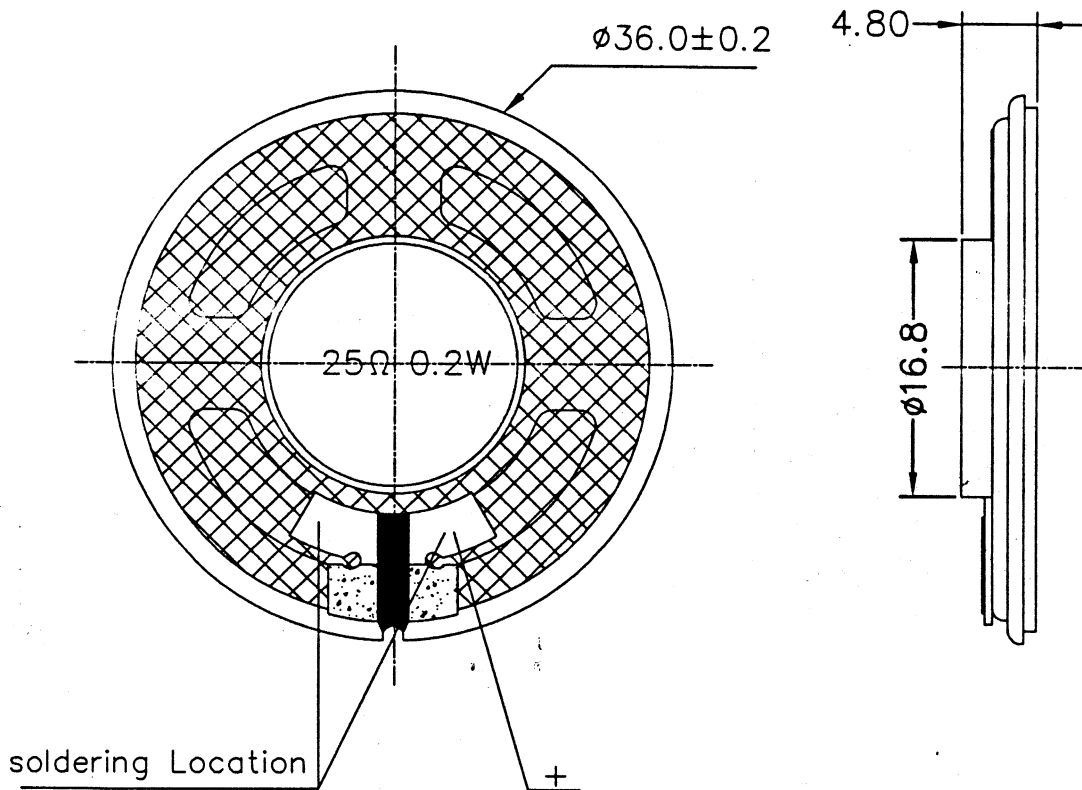
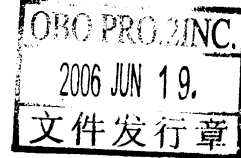
PART NAME
DYNAMIC SPEAKER

SHEET
3 OF 7

3. Mechanical Layout And Dimensions

3.1 Dimensions

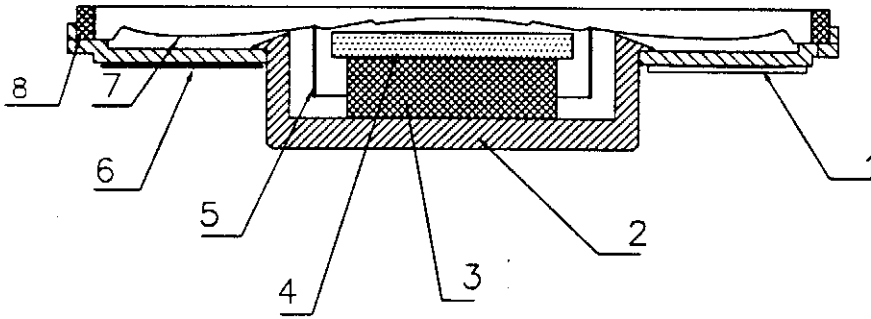
Unit: mm Tolerance: ± 0.3



※1 PCB Soldering Temperature 380° Max For 3 Seconds.

3.2 Construction Diagram

OBO PRO
2006 JUN 19.
文件发行章

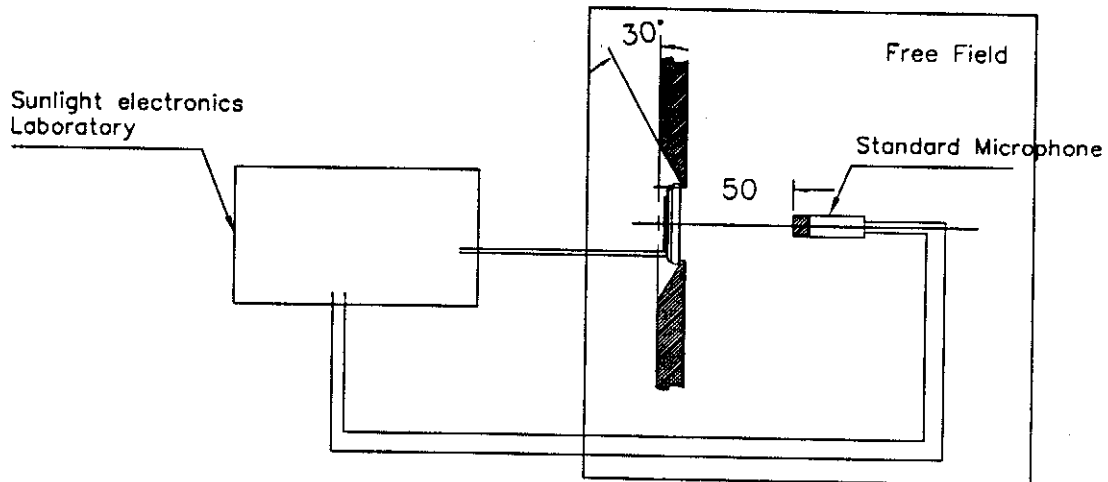


NO	PART NAME	MATERIAL	Q'TY
9			
8	GASKET	ABS	
7	DIAPHRAGM	MYLAR	1
6	CLOTH	CLOTH	1
5	VOICE COIL	DIA 13.4mm	1
4	WASHER	SPCC	1
3	MAGNET	NdFeB	1
2	YOKE	SPCC	1
1	TERMINAL	P.C.B	1

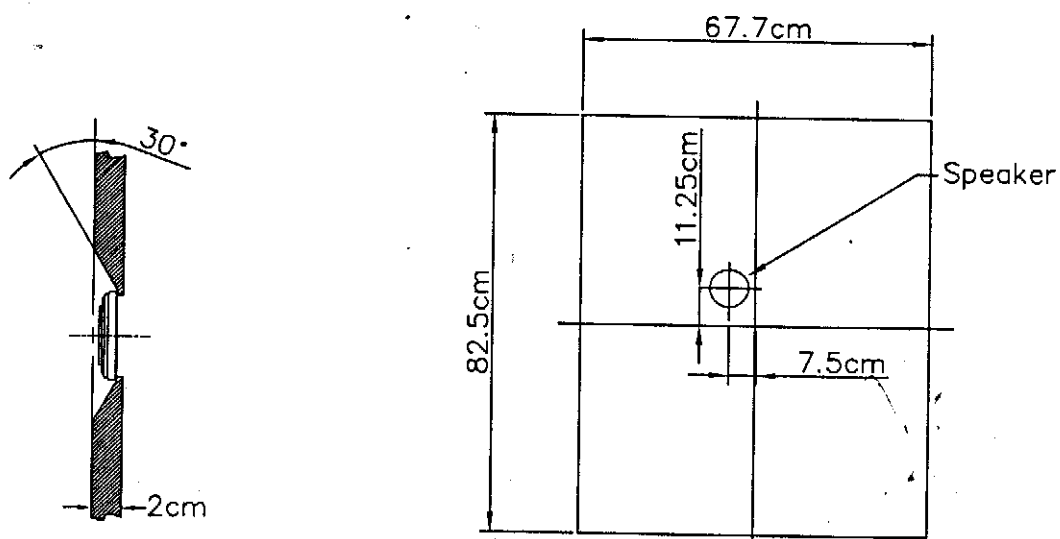
4. Test Method

4.1 Measurement Diagram

Electroacoustic
Testing Adapter



4.2 Standard Baffle



OBO PRO
2006 JUN 19.
文件发行

OBO Pro.2

SPECIFICATIONS

MODEL NO.
OBO-36025F-01

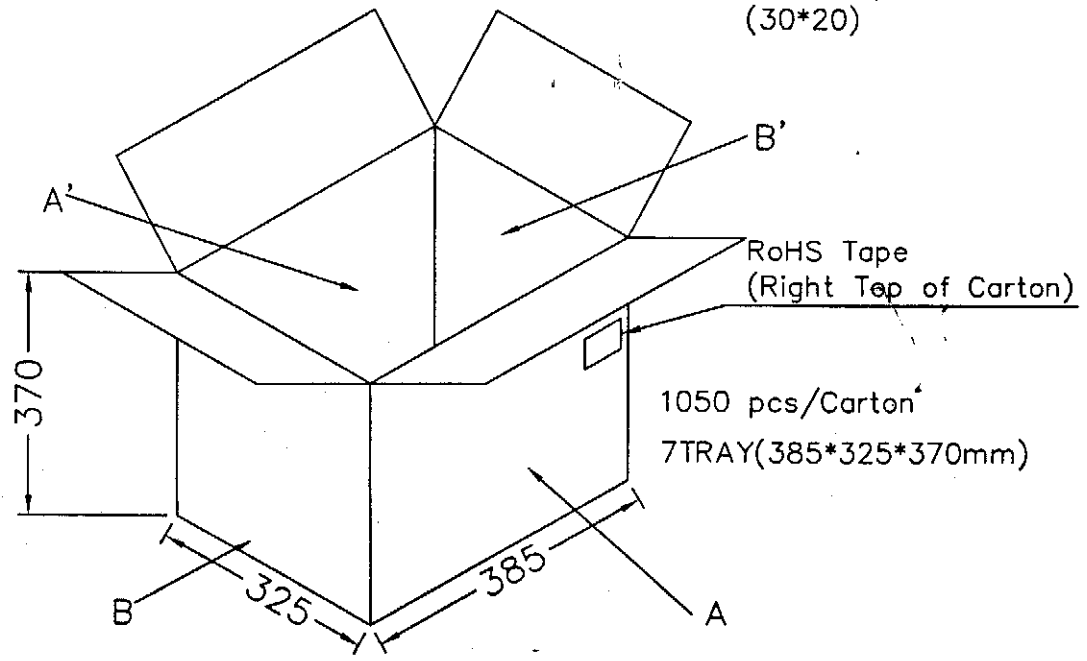
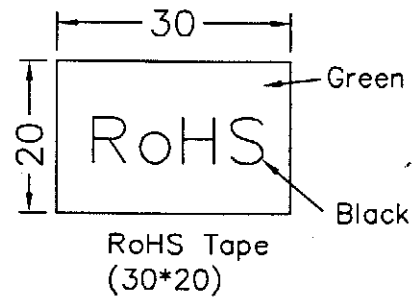
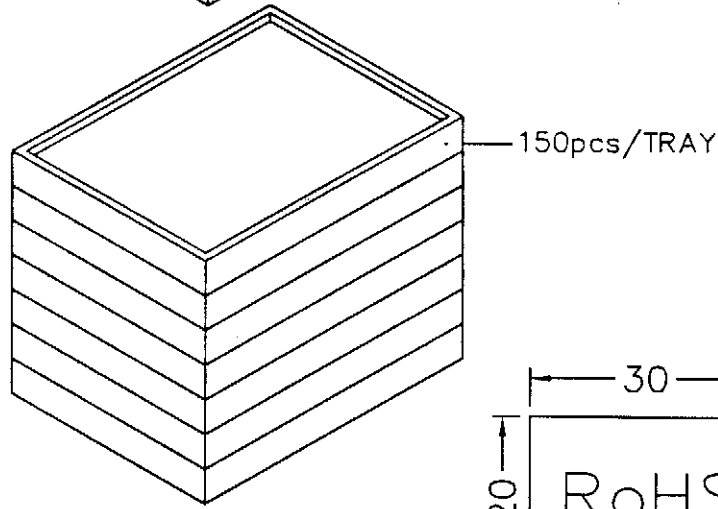
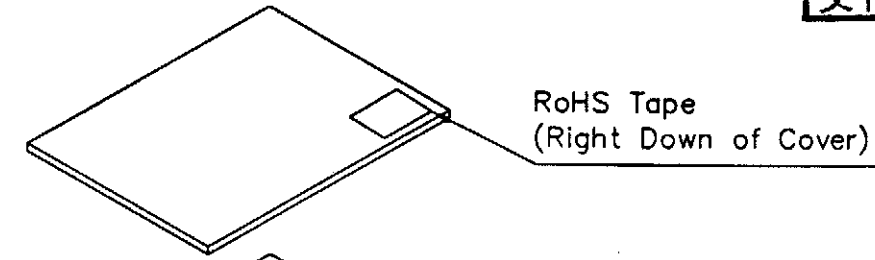
PART NAME
DYNAMIC SPEAKER

SHEET
6 OF 7

※1 5. Package

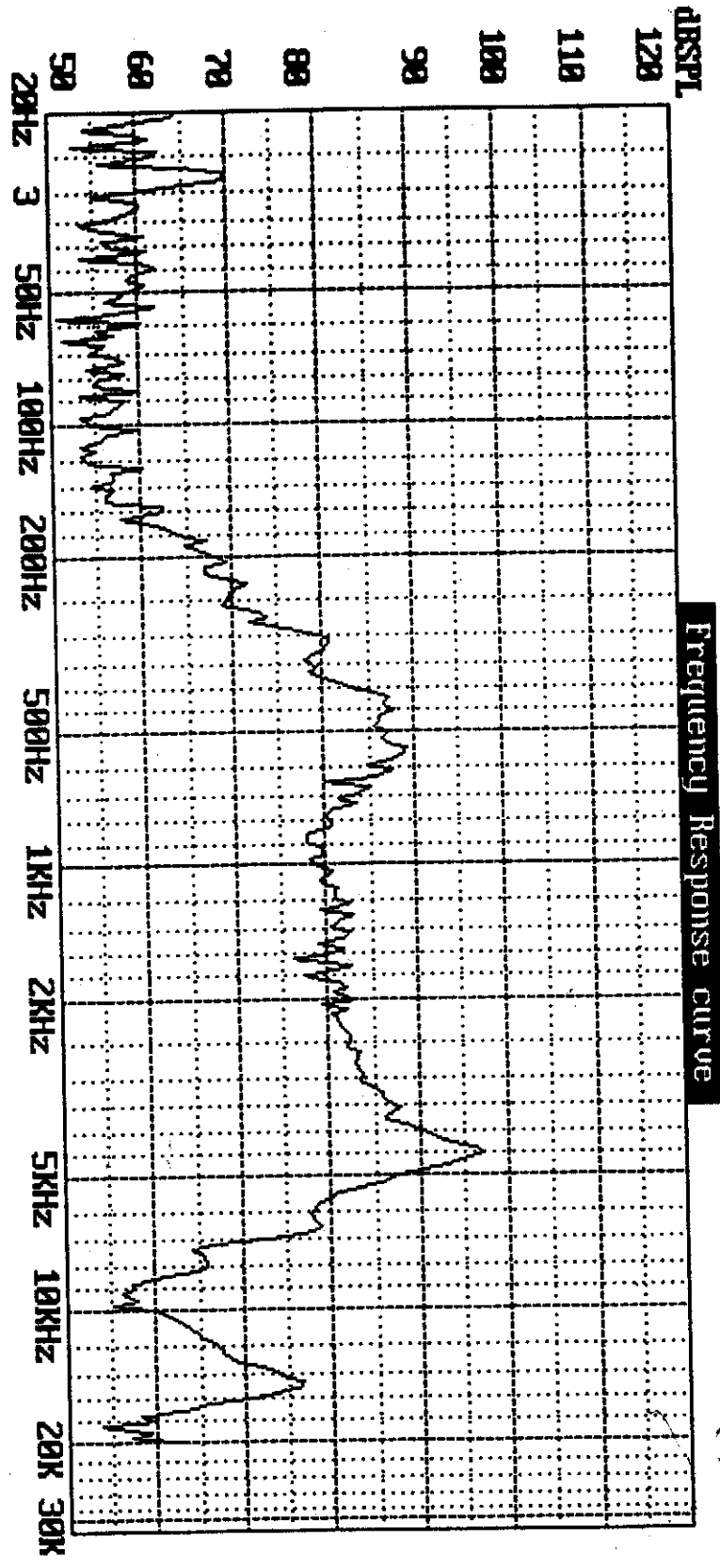
Unit: mm

OBO PRO
2006 JUN 19.
文件发行章



Firm: OBO Model: OBO-36025F-01 DATE: 07-04-2006 TIME: 15:32:43
 1000Hz Sens. = 78.9dB SPL Pass F.R.: Pass DCR: 25.63R Pass
 Average SPL: 79.9dB SPL Pass (800:1000:1200:1500Hz) Sweep Speed: 1/24 Oct.

B 6.11



dB SPL

Frequency Response Curve

Voltage applied for F.R. = 2.240V Start F. = 20Hz Stop F. = 20000Hz
 Measuring Distance = 0.50M

Mfg.: OBO-36025F-01 Measured using Sunlight 1600; Fax: 886-2-22230727