

OBO Pro.2

SPECIFICATIONS

MODEL NO
OBO-40008F-01

PART NAME
DYNAMIC SPEAKER

2 IN SHEET
2 OF 6

OBO Pro.2 IN SHEET
2009 MAY 13
文件发行章

MODEL NO : OBO-40008F-01

Features:Conformity RoHS Directive(2002/95/EC) Requests.

1. General Specifications

| Items | Spec. |
|-------------------------------------|--|
| Magnet | Size: $\phi 12.5 \times 1.5$ mm |
| Weight | Approx 9.456.3 Grams |
| Nominal Impedance | 8 Ohm $\pm 15\%$ At 800KHz/1V |
| Power Rating | Normal 0.2W. Maximum 0.5W. |
| Resonant Response | 500 ± 150 Hz |
| Output Sound Pressure Level (S.P.L) | 80 ± 3 db/0.2Watt 0.5Meter Average at 1000,1200,1500,2000 Hz. |
| Frequency Range | 400~12,000Hz.Average SPL-10dB. |
| Distortion | 5% Maximum At 800Hz.0.2 W. |
| Operating temp | -25 $^{\circ}$ C~50 $^{\circ}$ C |
| Storage Temperature | -25 $^{\circ}$ C~55 $^{\circ}$ C |
| Abnormal Sound Test | Must be Normal Tested by 1.26Volts. Sine Wave. |
| Polarity | Diaphragm Shall More Forward When Apply a Positive DC Current To The "+" or "marked" Terminal. |

2. Environmental Test

| | | |
|------------------------|---|---|
| Humidity Test | Temperature: | +40 ± 3 $^{\circ}$ C |
| | Relative Humidity: | 90% ~ 95% |
| | Duration: | 96 Hours |
| | Duration of recovery: | 6 Hours |
| Temperature Cycle Test | Temperature: | +55 $^{\circ}$ C \rightarrow +25 $^{\circ}$ C \rightarrow -25 $^{\circ}$ C \rightarrow +25 $^{\circ}$ C |
| | Duration: | 1Hour 1Hour 1Hour 1Hour |
| | Cycle: | 3 Cycles |
| Load Test | White Noise With Weighted Filter 1.26 Volts.(RSM) 100 Hrs 20~20,000Hz Resonant Fequency. | |
| Vibration Test | Vibration Direction: | 3 axes |
| | Frequency: | 1,000 Cycle/Minute |
| | Amplitude: | 1.5m/m |
| | Endurance: | 1 Hour in Each Plane |
| Drop Test | 75cm Free Falling On 1CM Wood Floor,10 Times | |

OBO Pro.2

SPECIFICATIONS

MODEL NO
OBO-40008F-01

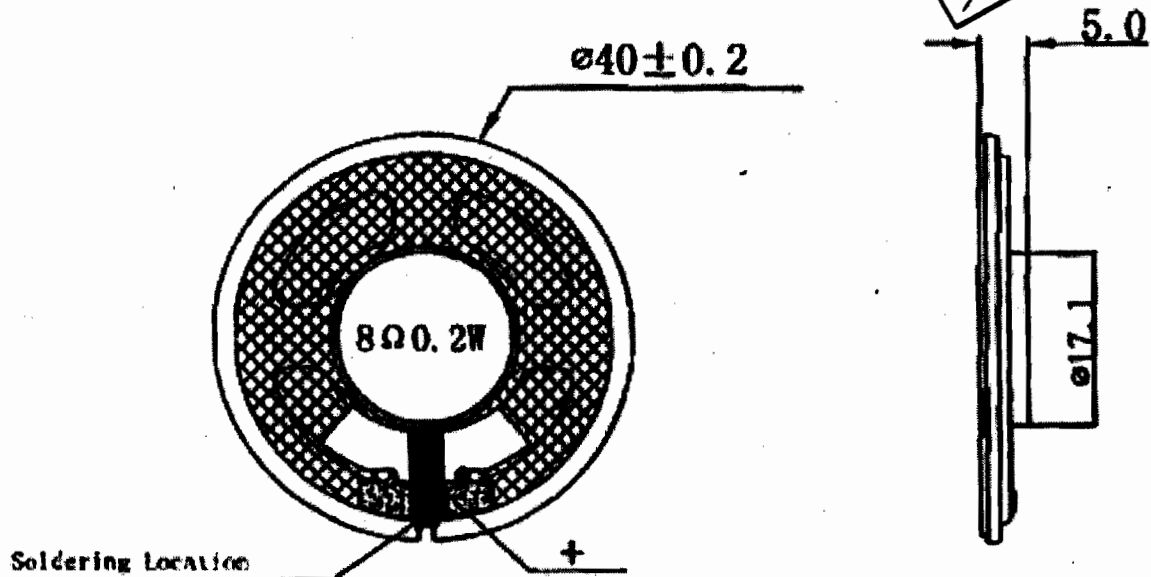
PART NAME
DYNAMIC SPEAKER

SHEET
1 OF 6

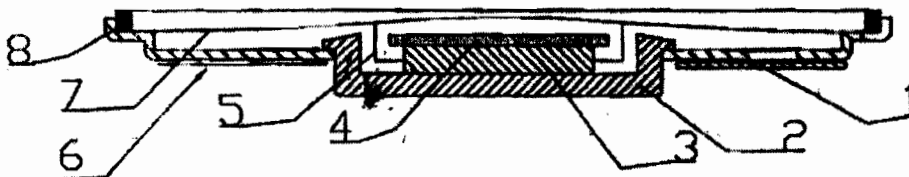
OBO P.P.N. 213
2009 MAY 13
文件发行章

3. Dimensions

Unit: mm Tolerance: ±0.3



Speaker Construction



| NO | PART NAME | MATERIAL | Q'TY |
|----|------------|------------|------|
| 10 | | | |
| 9 | | | |
| 8 | GASKET | ABS | 1 |
| 7 | DIAPHRAGM | MYLAR | 1 |
| 6 | CLOTH | CLOTH | 1 |
| 5 | VOICE COIL | DIA 13.4mm | 1 |
| 4 | WASHER | SPCC | 1 |
| 3 | MAGNET | NdFeB | 1 |
| 2 | YOKE | SPCC | 1 |
| 1 | TERMINAL | P.C.B | 1 |
| NO | PART NAME | MATERIAL | Q'TY |

OBO Pro.2

SPECIFICATIONS

MODEL NO
OBO-40008F-01

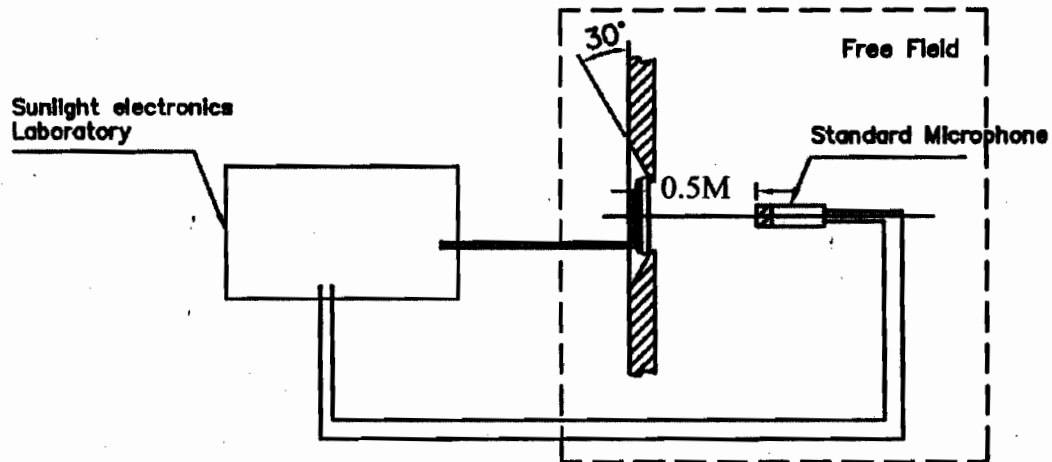
PART NAME
DYNAMIC SPEAKER

SHEET
40A 6

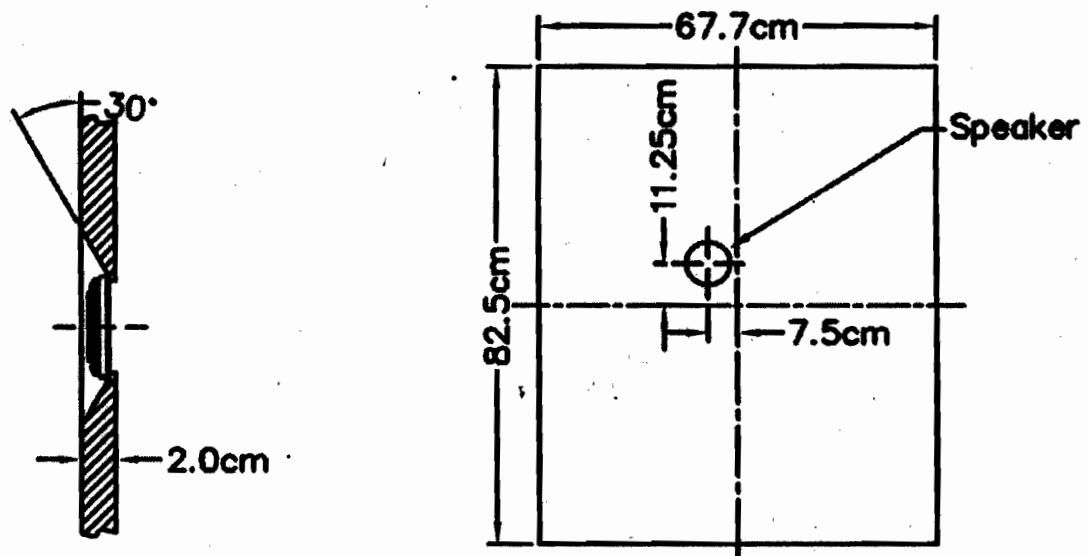
OBO PR0.2 INC.
2009 MAY 13
文件发行章

4. Measurement Method 4.1 Measurement Diagram

Electroacoustic
Testing Adapter



4.2 Standard Baffle



OBO Pro.2

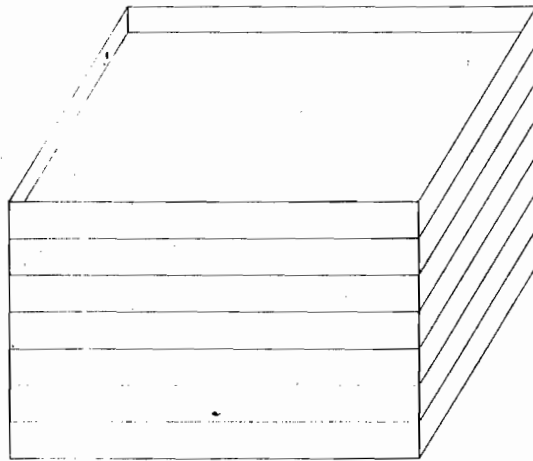
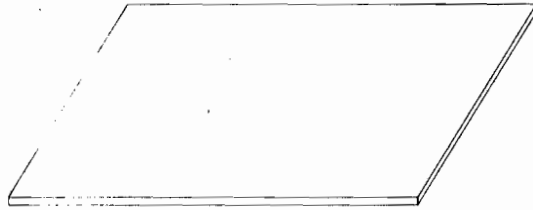
SPECIFICATIONS

MODEL NO
OBO-40008F-01

PART NAME
DYNAMIC SPEAKER

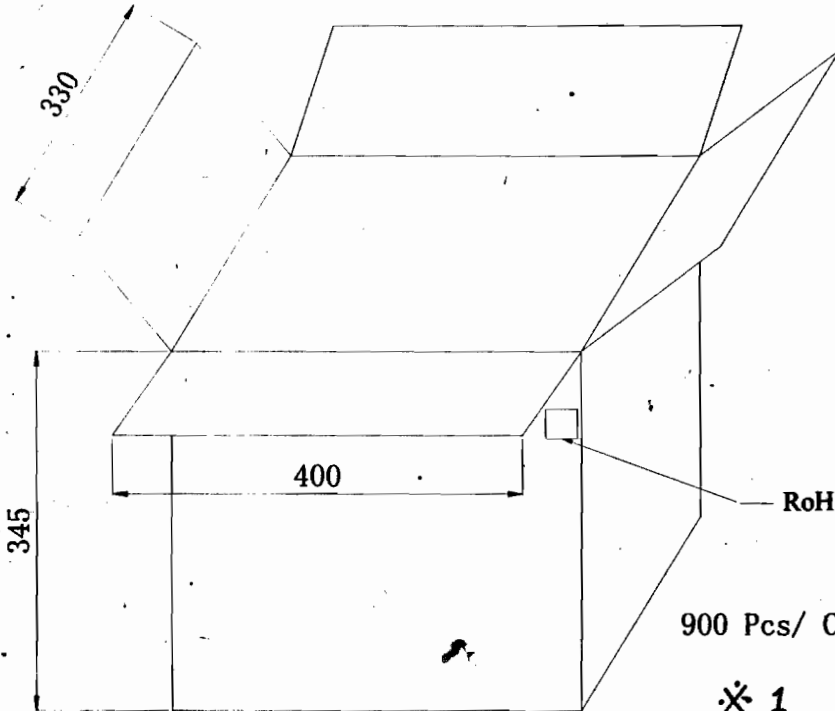
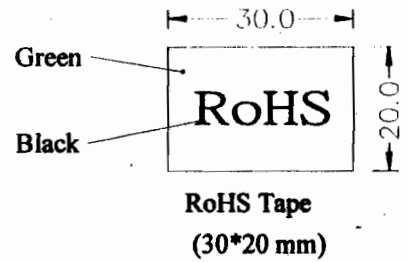
SHEET
5 OF 6

5. PACKAGING:



45Pcs/Tray

※ 1



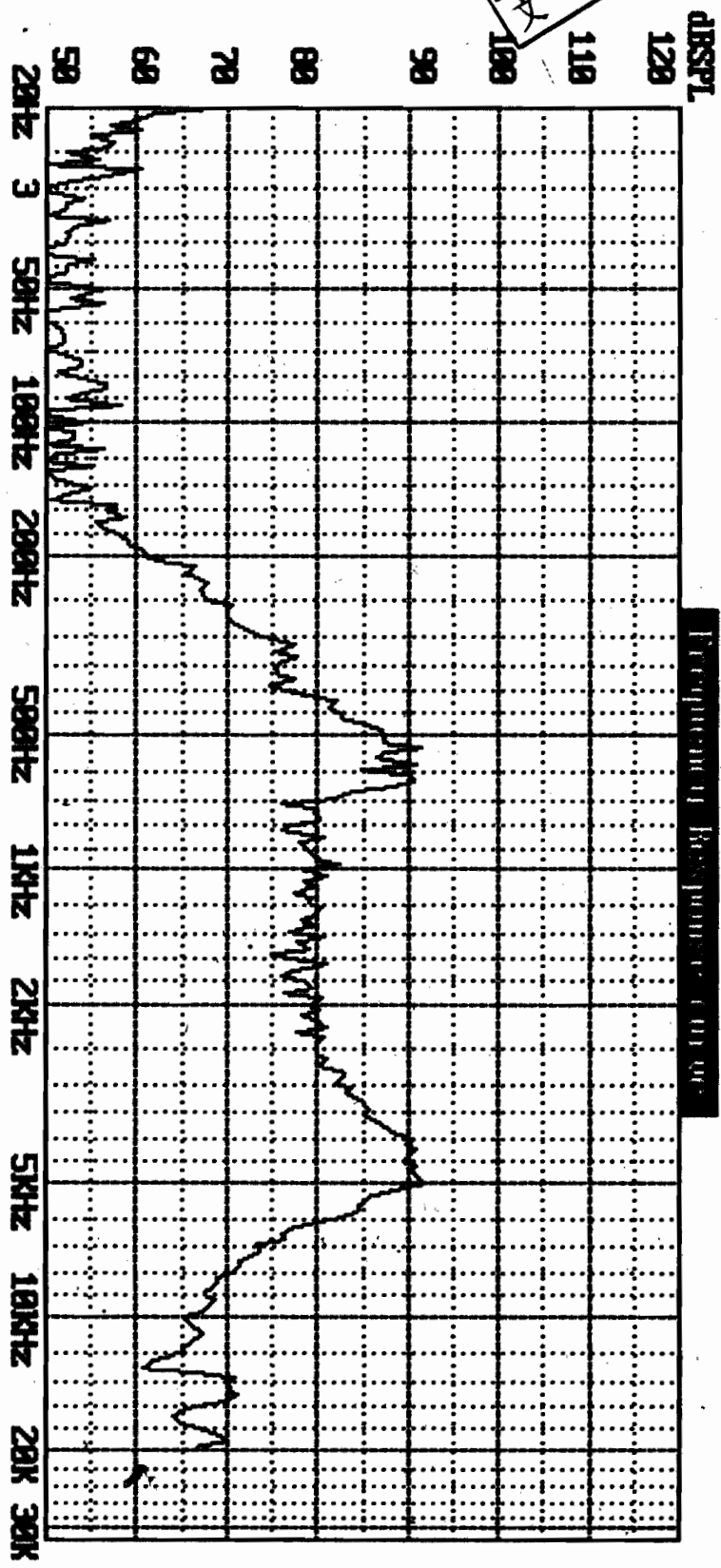
900 Pcs/ Carton

※ 1

OBO PRO.2 INC.
 2009 MAY 13
 文件发行章

Firm: OBO Model: 4800RF-01 DATE: 05-12-2009 TIME: 04:12:17
 1000Hz Sens. = 78.2dBSPL / Pass R.R.: Pass DCR: 6.269 Pass
 Average SPL: 78.9dBSPL Pass (1000:1200:1500:2000Hz) Sweep Speed: 1/24 Oct.

B 6.11



Voltage applied for **[REDACTED]** = 1.268V **[REDACTED]** = 20Hz **[REDACTED]** = 20000Hz
 Measuring Distance = 0.58M

Mfg.: Measured using Sunlight 1600: Fax: 886-2-22230727