



# SPECIFICATIONS

MODEL NO  
OBO-40008G-01

PART NAME  
DYNAMIC SPEAKER

SHEET ZINC  
1 OF 505

文件发行章

## ALTERNATION HISTORY

Marking	Date	ECN NO.	REV.	Description	Page	PREPARE BY	APPROVE BY
※1	APR.26,2016	DG1603012	H	Change the PCB	5	<i>[Signature]</i>	<i>[Signature]</i>

REV.	DATE	PREPARED BY	CHECKED BY	APPROVED BY
H	APR.26,2016	<i>[Signature]</i>	<i>[Signature]</i>	<i>[Signature]</i>



# SPECIFICATIONS

MODEL NO  
OBO-40008G-01

PART NAME  
DYNAMIC SPEAKER

SHEET  
2 OF 5



MODEL NO : OBO-OBO-40008G-01

Features: Conformity RoHS Directive(2002/95/EC) Requests.

## 1. General Specifications

Items	Spec.
Magnet	Materials NDFEB Size: $\Phi 12.6 \times 1.2\text{mm}$
Weight	Approx 5.4 Gram
Nominal Impedance	8 Ohm $\pm 15\%$ At 1000 Hz/1.0V
Power Rating	Normal 0.2 W. Maximum 0.5W.
Lowest Resond Frequency	600 $\pm 150\text{Hz}$
Output Sound Pressure Level (S.P.L)	78 $\pm 3$ dB/0.2W/0.5M Average at 1000,1200,1500,2000Hz.
Frequency Response Range	350 ~ 11,000 Hz. Average SPL -10dB.
Distortion	5% Maximum at 1000Hz/0.2W
Abnormal Sound Test	Must be Normal Tested by 1.26Volts. Sine Wave.
Polarity	Diaphragm shall move Forward when Apply a Positive DC Current to the "+" or "Marked" Terminal.
Operating Temperature	-20°C To +50°C
Storage Temperature	-25°C To +55°C

## 2. Environmental Test

Humidity Test	Temperature:	+40°C $\pm 3^\circ\text{C}$	
	Relative Humidity:	90% ~ 95%	
	Duration:	96 Hours	
	Duration of recovery:	6 Hours	
Temperature Cycle Test	Low Temperature:	-25°C $\pm 3^\circ\text{C}$	
	High Temperature:	+55°C $\pm 3^\circ\text{C}$	
	Duration of recovery:	1 Hours	
	Duration of Transfer Time:	Less Than 5 to 7Minutes	
Vibration Test	Cycle:	3 Cycles	
	Vibration Direction:	3 axes	
	Mounting:	Unit Shall Be Rigidly Restrained On The Table	
	Frequency:	1,000 Cycle/Minute	
Load Test	Amplitude:	1.5m/m	
	Endurance:	1 Hour in Each Plane	
	Duration of Transfer Time:	Less Than 5Minutes	
	White Noise With Weighted Filter	1.26Volts.(RMS) 96 Hrs.	
Drop Test	20~20,000Hz Resonant Frequency.		
	Drop the speakers contained in normal box onto the board 40mm thick 10 times from the height of 75cm .		



SPECIFICATIONS

MODEL NO  
OBO-40008G-01

PART NAME  
DYNAMIC SPEAKER

SHEET  
3 OF 5

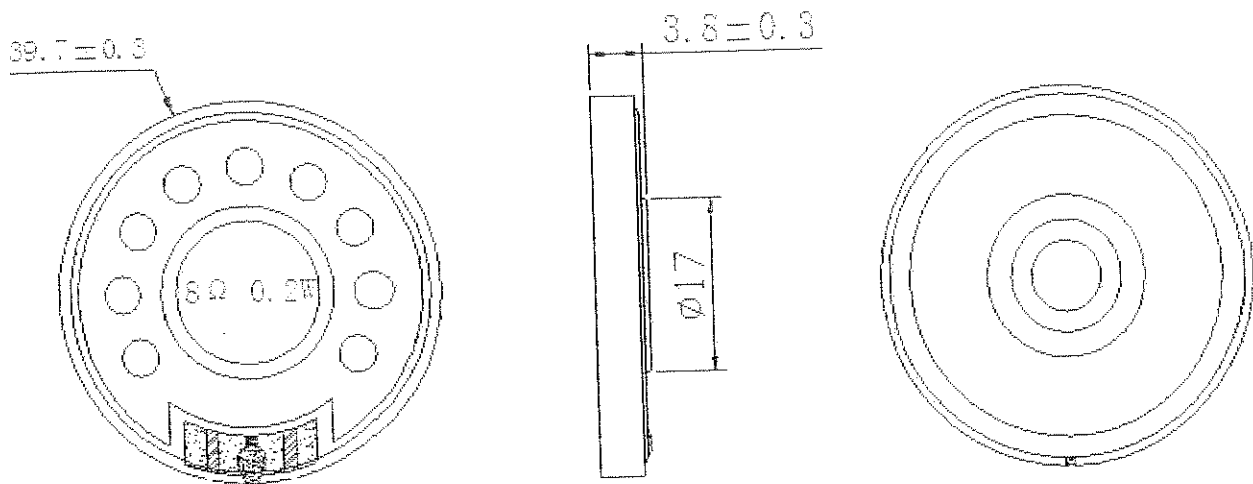
OBO PRO. 2INC.  
2016.05.05  
文件发行章

3. Mechanical Layout And Dimensions

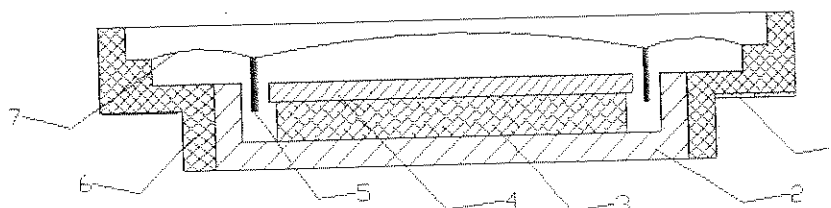
3.1 Dimensions

Unit:mm Tolerance:±0.5

※1



3.2 Construction Diagram



NO	PART NAME	MATERIAL	Q'TY
7	DIAPHRAGM	MYLAR	1
6	CASE	PBT	1
5	VOICE COIL	DIA 13.3mm	1
4	WASHER	SPCC	1
3	MAGNET	NDFEB	1
2	YOKE	SPCC	1
1	TERMINAL	P.C.B	1



# SPECIFICATIONS

MODEL NO  
OBO-40008G-01

PART NAME  
DYNAMIC SPEAKER

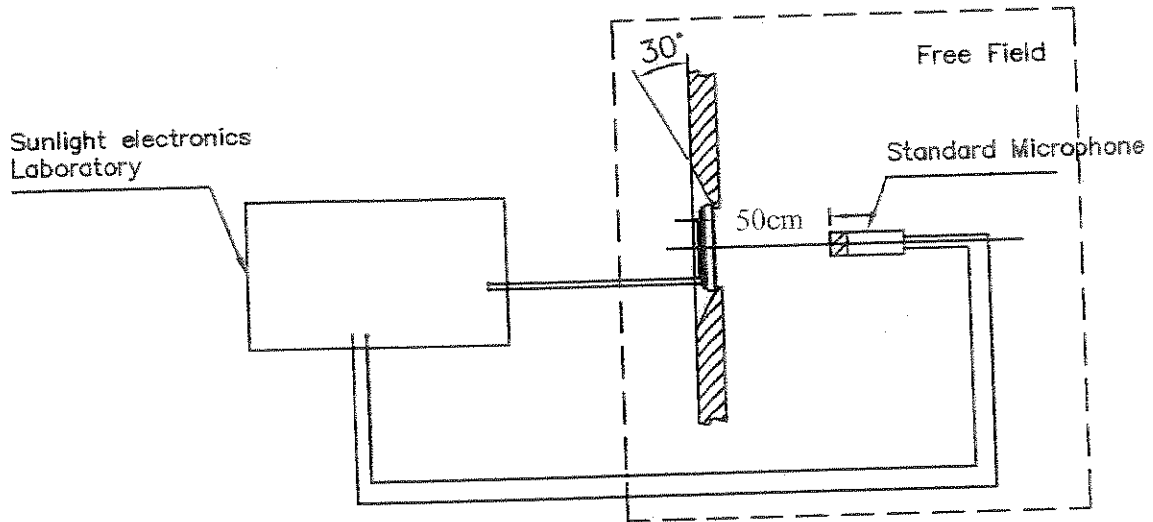
SHEET  
4 OF 5

OBO PRO. 21NO.  
2015.05  
文件发行章

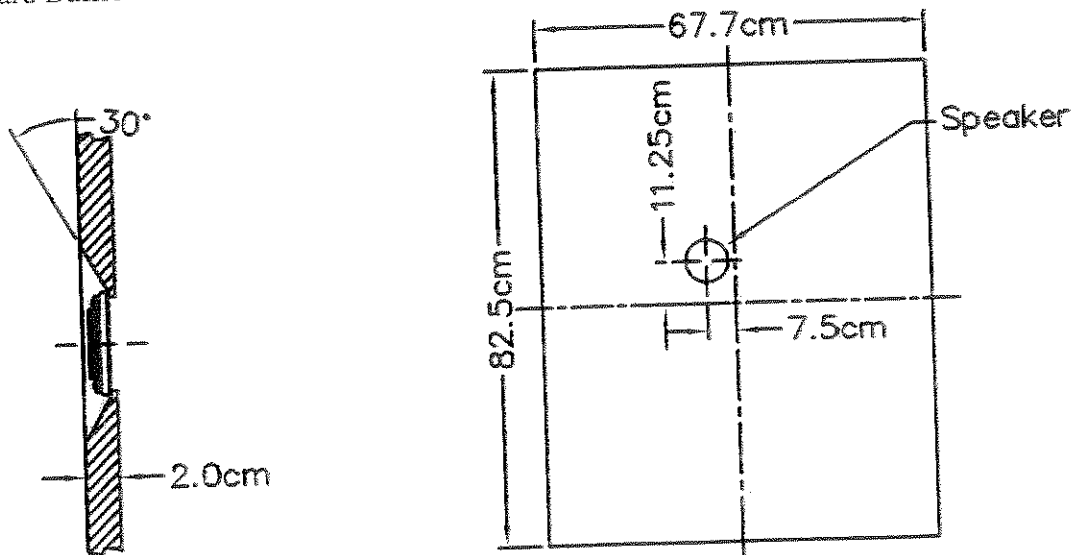
## 4. Test Method

### 4.1 Measurement Diagram

Electroacoustic  
Testing Adapter



### 4.2 Standard Baffle





ROHS COMPLIANT

# SPECIFICATIONS

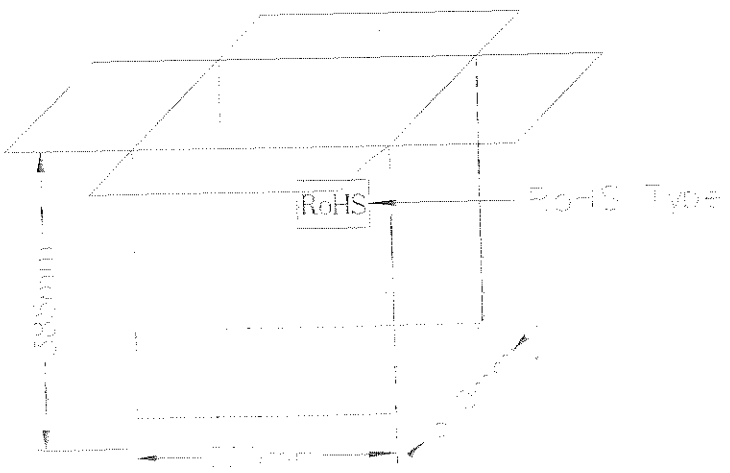
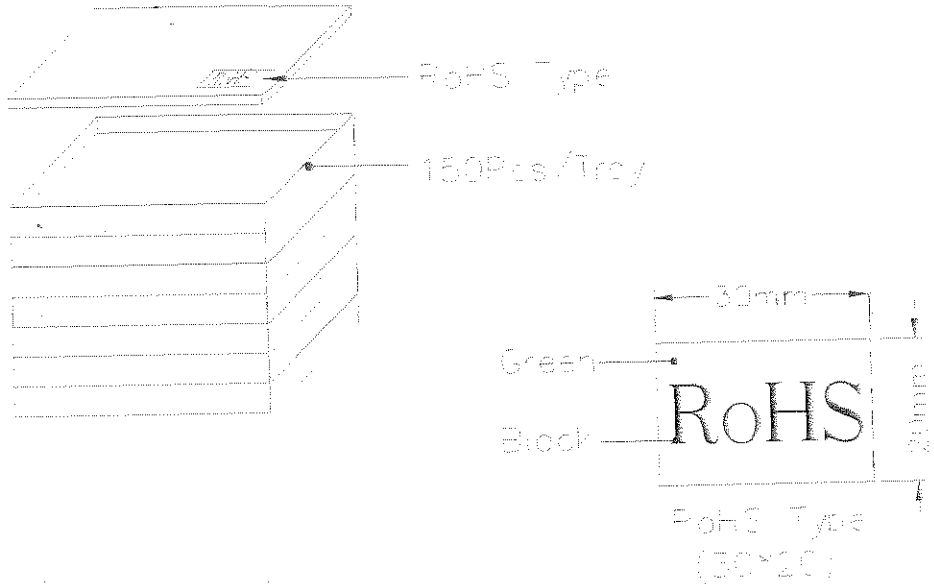
MODEL NO  
OBO-40008G-01

PART NAME  
DYNAMIC SPEAKER

SHEET  
5 OF 5

## 5.Packing

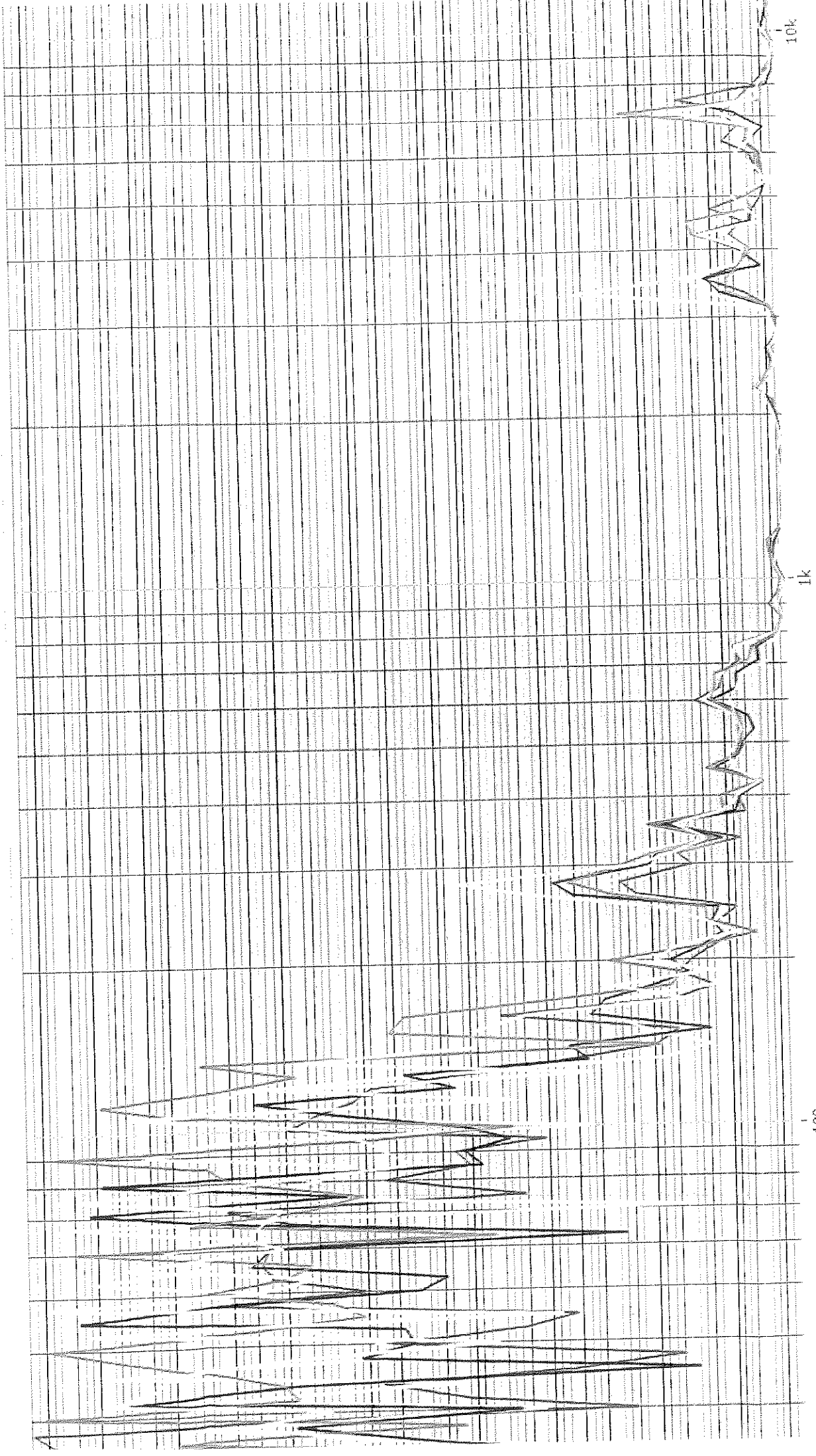
OBO PRO. 2INC  
2016.05.05  
文件发行章



150Pcs/Troy

THD s/m: OBO-40008G-  
THD s/r: OBO-40008G-  
THD s/m: OBO-40008G-  
THD s/r: OBO-40008G-  
THD s/m: OBO-40008G-

OBO PRO. 2INC.  
2006.05.05  
文件发行章

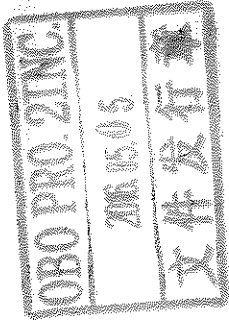


[Hz]

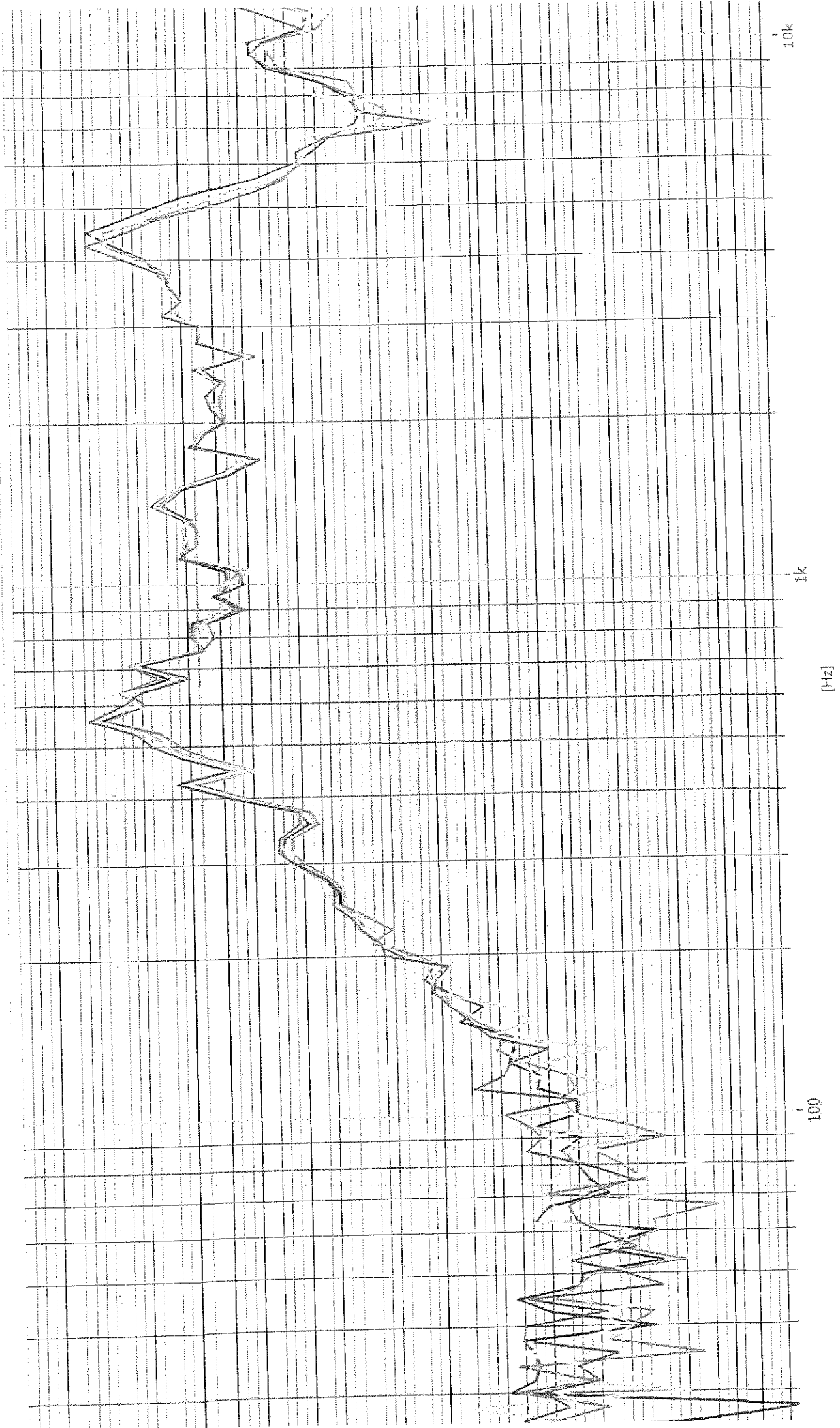
100

1k

10k



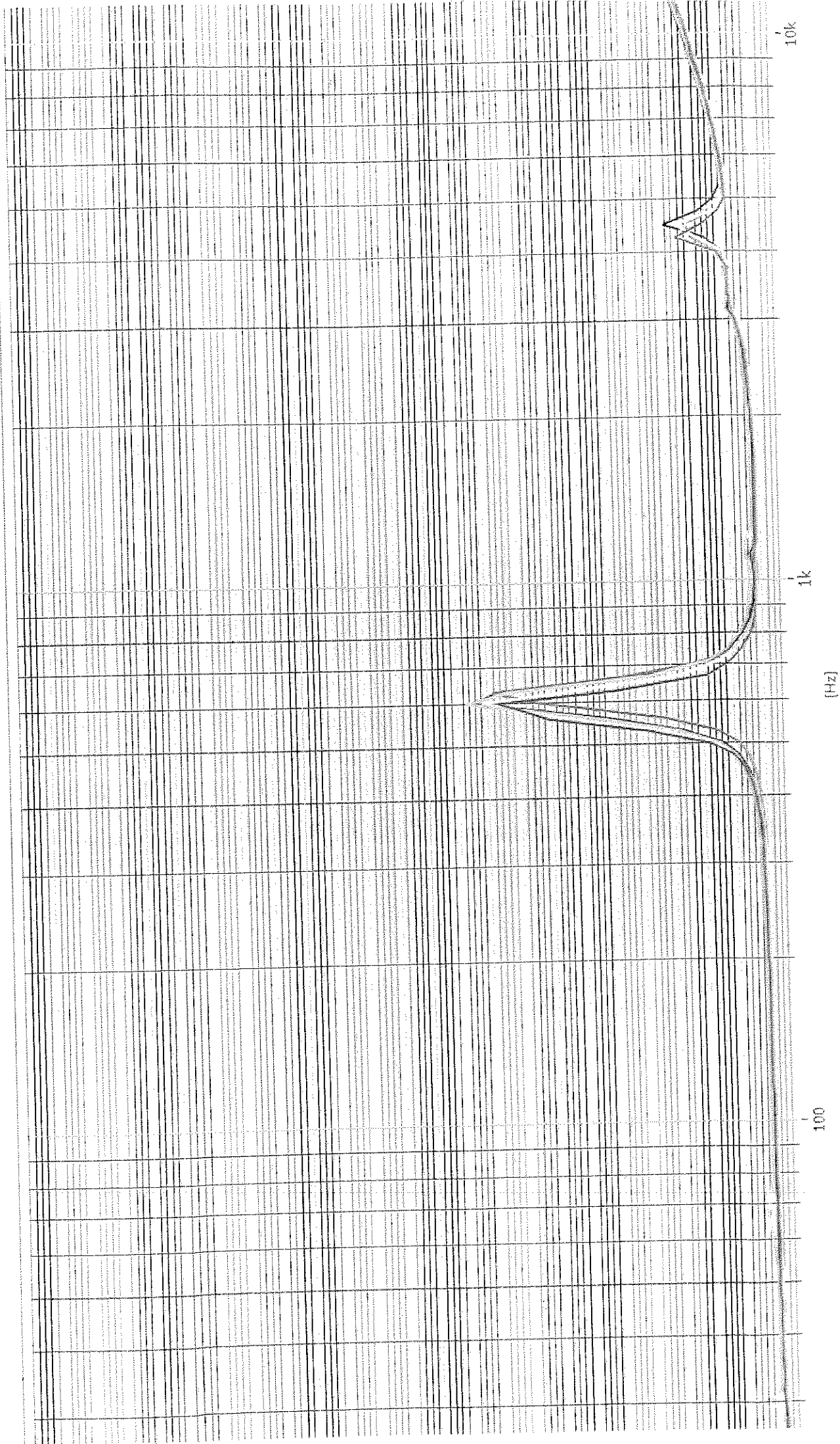
- 1# Average at 1000,1200,1500,2000 SPL 79.5dB  
Fundamental s/m: OBO-400086G-
- 2# Average at 1000,1200,1500,2000 SPL 80.7dB  
Fundamental s/m: OBO-400086G-
- 3# Average at 1000,1200,1500,2000 SPL 80.7dB  
Fundamental s/m: OBO-400086G-
- 4# Average at 1000,1200,1500,2000 SPL 80.7dB  
Fundamental s/m: OBO-400086G-
- 5# Average at 1000,1200,1500,2000 SPL 80.4dB  
Fundamental s/m: OBO-400086G-



OBO PRO. ZINC  
 2006.05.05  
 文件发行章

Impedance s/n: OBO-40008G-  
 Impedance s/n: OBO-40008G-  
 Impedance s/n: OBO-40008G-  
 Impedance s/n: OBO-40008G-  
 Impedance s/n: OBO-40008G-

1# FO 600Hz  
 2# FO 600Hz  
 3# FO 600Hz  
 4# FO 630Hz  
 5# FO 600Hz



10k

1k

(Hz)

100